
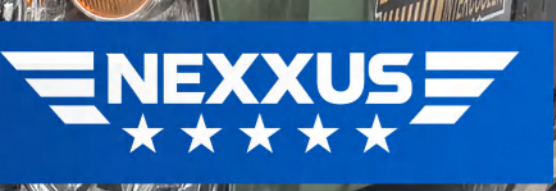




TERRA


NEXXUS INTRODUCTION
TIRE
TRUCK AND BUS


★ ★ ★ ★ ★
2026
|
2027
CATALOGUE
TRUCK AND BUS TIRE



NEXXUS INTRODUCTION

Established at the turn of 2023-2024, Nexxus is a new premium tire brand.

The Nexxus Backed by advanced technology, state-of-the-art equipment, and robust R&D capabilities, Nexxus adheres to strict quality control standards and holds ISO9001:2015 certification and China's CCC certification.

Our products are well-received in both the domestic Chinese market and Southeast Asia. As a dynamic and rapidly growing name in the tire industry, Nexxus remains committed to the business philosophy of "Your Safety, Our Promise." We sincerely look forward to cooperating with partners from all industries to build a successful future together.

Nexxus Truck Tires provides a wide range of tire solutions designed to meet diverse road conditions and driving requirements. Understanding that durability, safety, and efficiency are essential for businesses aiming to optimize daily operations while controlling costs, Nexxus is dedicated to supporting transportation companies with high-performance tires that enable sustainable and economical transport. Whatever your commercial needs, Nexxus truck and bus tires are built to deliver.



NEXXUS INDUSTRIAL LIMITED

01



NX118(G)

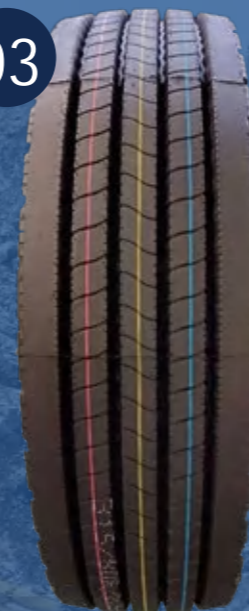
Pattern characteristic

- Suitable for all positions of truck and bus.
- Designed for highway and mixed road surfaces.
- Three zigzag longitudinal grooves, enhancing handling stability.
- Special ejection design on groove bottom, enhancing puncture resistance, reducing groove crack.



Size	P.R	Pattern	L/S	Standard Rim	Tread Depth (mm)	Section Width (mm)	Tread Width (mm)	Outer Diameter (mm)
10.00R20	18PR	NX118	149/146L	7.50	15.5	276	210	1049
11.00R20	18PR	NX118	152/149K	8.00	16.5	293	225	1085
12.00R20	20PR	NX118	156/153K	8.50	17.5	315	240	1125
12.00R20	20PR	NX118G	156/153K	8.50	17.0	315	240	1125
315/80R22.5	20PR	NX118	156/153L	9.00	15.0	312	237	1082
12.00R24	20PR	NX118G	160/157K	8.50	15.0	315	230	1226
12.00R24	20PR	NX118	160/157K	8.50	17.0	315	230	1226

03



NX166

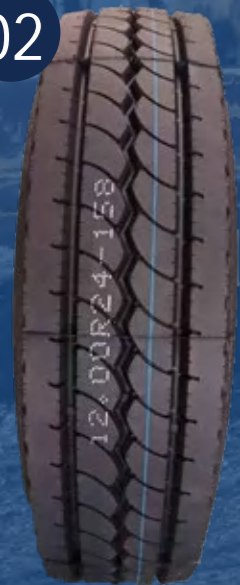
Pattern characteristic

- Unique, stylish design.
- Special patterned tread for lower rolling resistance and better fuel economy.
- Advanced tread compound and structure ensure even wear, higher durability, and longer mileage.
- High-strength carcass steel wire allows multiple retreads.



Size	P.R	Pattern	L/S	Standard Rim	Tread Depth (mm)	Section Width (mm)	Tread Width (mm)	Outer Diameter (mm)
315/80R22.5	20PR	NX166	156/153L	9.00	17.0	312	255	1082

02



NX158

Pattern characteristic

- Excellent quiet tone effect.
- Continuous groove tire shoulder effectively prevents tread irregular wear.
- Super sub-port structure, with higher load capacity.



Size	P.R	Pattern	L/S	Standard Rim	Tread Depth (mm)	Section Width (mm)	Tread Width (mm)	Outer Diameter (mm)
12.00R24	20PR	NX158	160/157K	8.50	16.5	315	230	1238

04



NX168(G)

Pattern characteristic

- Suitable for all wheel positions on trucks and buses.
- The widened tread and staggered pattern design provides excellent traction performance.
- Optimized tire ground pressure distribution effectively extends the tire service life.



Size	P.R	Pattern	L/S	Standard Rim	Tread Depth (mm)	Section Width (mm)	Tread Width (mm)	Outer Diameter (mm)
9.00R20	16PR	NX168	144/142K	7.00	16.2	259	195	1030
11.00R20	18PR	NX168	152/149K	8.00	15.5	293	230	1096
12.00R20	20PR	NX168G	156/153K	8.50	16.0	315	240	1125
12.00R20	20PR	NX168	156/153K	8.50	16.0	315	240	1136
7.50R16LT	14PR	NX168	122/118K	6.00G	15.0	215	170	815
8.25R16LT	16PR	NX168	128/124K	6.50H	15.0	235	174	865

05



NX266

Pattern characteristic

- Three-groove tread pattern design delivers excellent riding comfort.
- Stable handling and precise control for confident driving.
- Wide pattern design enhances mileage for longer-lasting performance.



Size	P.R	Pattern	L/S	Standard Rim	Tread Depth (mm)	Section Width (mm)	Tread Width (mm)	Outer Diameter (mm)
315/80R22.5	20PR	NX266	156/153L	9.00	18.0	312	255	1082

07



NX302

Pattern characteristic

- Suitable for all positions of trucks and buses.
- Designed for highway and mixed road surfaces.
- Unique tread pattern design helps maintain stability and promotes even wear while deepened grooves improve tire mileage.



Size	P.R	Pattern	L/S	Standard Rim	Tread Depth (mm)	Section Width (mm)	Tread Width (mm)	Outer Diameter (mm)
12R22.5	18PR	NX302	152/149L	9.00	17.0	300	240	1096

06



NX301

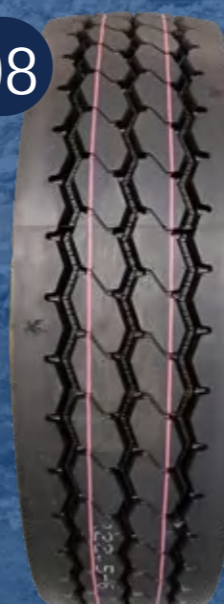
Pattern characteristic

- Suitable for all positions of trucks and buses.
- Designed for highway and mixed road surfaces.
- Unique tread pattern design helps maintain stability and promotes even wear while deepened grooves improve tire mileage.



Size	P.R	Pattern	L/S	Standard Rim	Tread Depth (mm)	Section Width (mm)	Tread Width (mm)	Outer Diameter (mm)
12R22.5	18PR	NX301	152/149L	9.00	18.0	300	240	1096

08



NX303

Pattern characteristic

- Suitable for the steer axles of trucks.
- Designed for use on national highways and other high-grade roads.
- The tread is widened and the pattern grooves are deepened for higher wear mileage.
- The tire's material distribution is optimized, resulting in a longer service life.



Size	P.R	Pattern	L/S	Standard Rim	Tread Depth (mm)	Section Width (mm)	Tread Width (mm)	Outer Diameter (mm)
11R22.5	18PR	NX303	146/143L	8.25	16.0	279	230	1065

09



NX304

Pattern characteristic

- Suitable for all positions on buses, and for the steer and trailer positions on trucks.
- Wide tread and wear-resistant design improve tire life.
- The groove pattern design effectively prevents stone retention for safer driving.



Size	P.R	Pattern	L/S	Standard Rim	Tread Depth (mm)	Section Width (mm)	Tread Width (mm)	Outer Diameter (mm)
11R22.5	18PR	NX304	146/143L	8.25	16.0	279	230	1065

11



NX338

Pattern characteristic

- The wide tread and deep groove design deliver ultra-long mileage and even abrasion.
- Unique tread compound enhances puncture and tear resistance.
- Ideal for specialized use in mining areas.



Size	P.R	Pattern	L/S	Standard Rim	Tread Depth (mm)	Section Width (mm)	Tread Width (mm)	Outer Diameter (mm)
11.00R20	18PR	NX338	152/149K	8.00	18.5	293	225	1096
7.50R16LT	16PR	NX338	124/120L	6.00G	15.0	212	160	804

10



NX313

Pattern characteristic

- Suitable for all positions of trucks and buses.
- Designed for highway and mixed road surfaces.
- Unique tread pattern design helps maintain stability and promotes even wear, while deepened grooves improve tire mileage.



Size	P.R	Pattern	L/S	Standard Rim	Tread Depth (mm)	Section Width (mm)	Tread Width (mm)	Outer Diameter (mm)
12R22.5	18PR	NX313	152/149L	9.00	16.5	300	230	1096

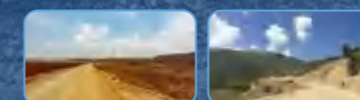
12



NX366

Pattern characteristic

- Drive position tire suitable for long-distance trucks and buses on highways.
- The wide tread and deep pattern design significantly enhance wear resistance and extend tire service life.
- Unique tread pattern helps maintain stability and promote even wear.
- This robust construction delivers a lower cost per kilometer/mile.



Size	P.R	Pattern	L/S	Standard Rim	Tread Depth (mm)	Section Width (mm)	Tread Width (mm)	Outer Diameter (mm)
12R22.5	18PR	NX366	152/149L	9.00	21.0	300	235	1096

13



NX369

Pattern characteristic

- Suitable for the drive position in short to medium-haul transportation.
- Designed for both paved roads and off-road conditions at speeds under 60 km/h.
- Excellent tread wear resistance.



Size	P.R	Pattern	L/S	Standard Rim	Tread Depth (mm)	Section Width (mm)	Tread Width (mm)	Outer Diameter (mm)
12R22.5	18PR	NX369	152/149L	9.00	20.0	300	235	1096
13R22.5	20PR	NX369	156/153L	9.75	19.5	300	250	1131

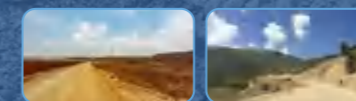
15



NX388

Pattern characteristic

- Superior load capacity with excellent cut resistance.
- Deep-groove block pattern delivers strong grip performance.
- Highly durable carcass construction allows for multiple retreads.



Size	P.R	Pattern	L/S	Standard Rim	Tread Depth (mm)	Section Width (mm)	Tread Width (mm)	Outer Diameter (mm)
9.00R20	16PR	NX388	144/142K	7.00	18.5	259	195	1030
10.00R20	18PR	NX388	149/146K	7.50	19.5	278	215	1065

14



NX378(G)

Pattern characteristic

- Suitable for the drive axles of tractors, dump trucks, and concrete mixer trucks.
- Designed for mining and severe off-road applications.
- Excellent wear resistance.
- Good cut and tear resistance.



Size	P.R	Pattern	L/S	Standard Rim	Tread Depth (mm)	Section Width (mm)	Tread Width (mm)	Outer Diameter (mm)
11.00R20	18PR	NX378	152/149K	8.00	18.5	293	225	1096
12.00R20	20PR	NX378G	156/153K	8.50	21.0	315	230	1136

16



NX399

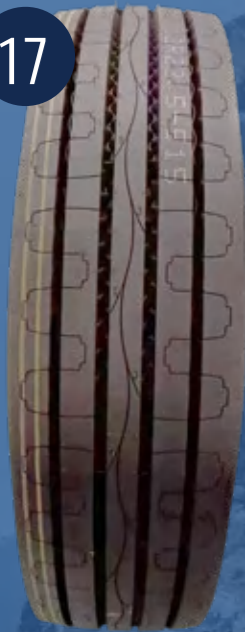
Pattern characteristic

- Suitable for the driving wheel of truck and coach.
- Suitable for short-distance transportation on good condition road.
- The unique pattern design can keep the stability of tires, which prevents the irregular wear and improves self-cleaning performance.



Size	P.R	Pattern	L/S	Standard Rim	Tread Depth (mm)	Section Width (mm)	Tread Width (mm)	Outer Diameter (mm)
12.00R20	20PR	NX399	156/153K	8.50	18.0	315	245	1136

17



NX515

Pattern characteristic

- Suitable for all positions on buses, and for the steer and trailer positions on trucks.
- Rational tread pattern distribution improves wear resistance and drainage performance.
- Straight rib patterns ensure even wear and efficient water evacuation, providing excellent wet traction and handling.



Size	P.R	Pattern	L/S	Standard Rim	Tread Depth (mm)	Section Width (mm)	Tread Width (mm)	Outer Diameter (mm)
12R22.5	18PR	NX515	152/149L	9.00	16.5	300	230	1096

19



NX585

Pattern characteristic

- Applicable to all wheel positions on trucks and passenger cars.
- Ideal for medium and long-distance travel on highways.
- The wide transverse grooves enhance traction and wet grip performance.



Size	P.R	Pattern	L/S	Standard Rim	Tread Depth (mm)	Section Width (mm)	Tread Width (mm)	Outer Diameter (mm)
12R22.5	18PR	NX585	152/149L	9.00	20.0	300	235	1096

18



NX575

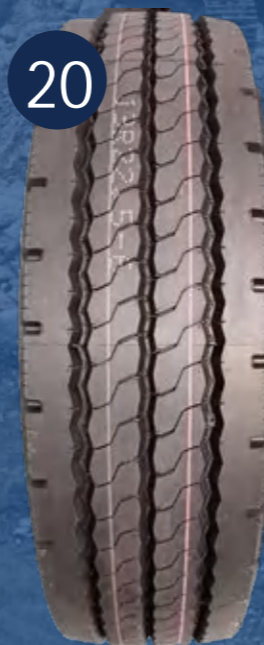
Pattern characteristic

- Suitable for all positions of trucks and buses.
- Designed for highway and mixed road surfaces.
- Unique tread pattern design helps maintain stability and promotes even wear, while deepened grooves improve tire mileage.



Size	P.R	Pattern	L/S	Standard Rim	Tread Depth (mm)	Section Width (mm)	Tread Width (mm)	Outer Diameter (mm)
12R22.5	18PR	NX575	152/149L	9.00	20.0	300	235	1096

20



NX666(+)

Pattern characteristic

- Applicable to all wheel positions on trucks and trailers.
- Reinforced bead design enhances the tire's load-carrying capacity.
- Special tread compound for short and medium-haul use offers excellent wear resistance.
- Groove-base stone ejectors reduce stone retention and effectively minimize tread damage.



Size	P.R	Pattern	L/S	Standard Rim	Tread Depth (mm)	Section Width (mm)	Tread Width (mm)	Outer Diameter (mm)
12R22.5	18PR	NX666	152/149L	9.00	16.5	300	235	1096
12R22.5	18PR	NX666+	152/149L	9.00	16.5	300	235	1096
13R22.5	20PR	NX666	156/153L	9.75	16.5	300	253	1131

21



NX676

Pattern characteristic

- High pattern saturation and advanced compound for excellent heat dissipation.
- Unique raised groove bottom for good self-cleaning ability.
- Excellent handling stability.
- Wide tread cap maximizes wear resistance and driving mileage.



Size	P.R	Pattern	L/S	Standard Rim	Tread Depth (mm)	Section Width (mm)	Tread Width (mm)	Outer Diameter (mm)
295/80R22.5	18PR	NX676	152/149L	9.00	15.0	298	224	1050

23



NX698

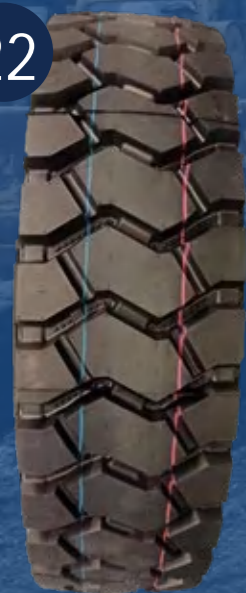
Pattern characteristic

- Sturdy pattern blocks provide strong traction.
- The wide tread and deep groove design deliver ultra-long mileage and even abrasion.
- Unique tread compound enhances puncture and tear resistance.
- Ideal for specialized use in mining areas.



Size	P.R	Pattern	L/S	Standard Rim	Tread Depth (mm)	Section Width (mm)	Tread Width (mm)	Outer Diameter (mm)
12R22.5	18PR	NX698	152/149L	9.00	23.0	300	240	1096

22



NX689

Pattern characteristic

- Sturdy pattern blocks provide strong traction.
- The wide tread and deep groove design deliver ultra-long mileage and even abrasion.
- Unique tread compound enhances puncture and tear resistance.
- Ideal for specialized use in mining areas.



Size	P.R	Pattern	L/S	Standard Rim	Tread Depth (mm)	Section Width (mm)	Tread Width (mm)	Outer Diameter (mm)
11.00R20	18PR	NX689	156/153K	8.00	18.5	293	230	1096

24



NX699

Pattern characteristic

- Suitable for driving position on mid-short transportation.
- Applied for paved road and off-road condition with speed less than 60km/h.
- High tread wear resistance performance.



Size	P.R	Pattern	L/S	Standard Rim	Tread Depth (mm)	Section Width (mm)	Tread Width (mm)	Outer Diameter (mm)
11.00R20	18PR	NX699	152/149K	8.00	20.0	259	230	1096
12.00R20	20PR	NX699	156/153K	8.50	20.5	315	245	1136

25



NX716

Pattern characteristic

- Suitable for truck drive axles.
- Drive position tire suitable for medium and long-distance travel on normal road applications.
- The overall tread pattern ensures even ground pressure distribution, offering greater handling stability.



Size	P.R	Pattern	L/S	Standard Rim	Tread Depth (mm)	Section Width (mm)	Tread Width (mm)	Outer Diameter (mm)
295/80R22.5	18PR	NX716	152/149L	9.00	20.0	298	232	1050

27



NX736

Pattern characteristic

- Suitable for truck drive axles.
- Drive position tire suitable for medium and long-distance travel on normal road applications.
- The overall tread pattern ensures even ground pressure distribution, offering greater handling stability.



Size	P.R	Pattern	L/S	Standard Rim	Tread Depth (mm)	Section Width (mm)	Tread Width (mm)	Outer Diameter (mm)
12R22.5	18PR	NX736	152/149L	9.00	20.0	300	235	1096

26



NX717

Pattern characteristic

- Suitable for all positions on buses, and for the steer and trailer positions on trucks.
- Wide tread and wear-resistant design improve tire life.
- The groove pattern design effectively prevents stone retention for safer driving.



Size	P.R	Pattern	L/S	Standard Rim	Tread Depth (mm)	Section Width (mm)	Tread Width (mm)	Outer Diameter (mm)
12R22.5	18PR	NX717	152/149L	9.00	16.5	300	240	1096
295/60R22.5	18PR	NX717	150/147K	9.00	15.0	288	250	920

28



NX756

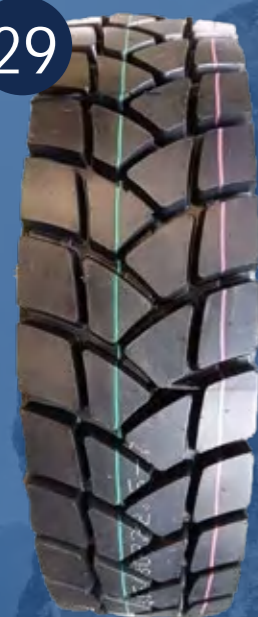
Pattern characteristic

- Suitable for truck drive axles.
- Drive position tire suitable for medium and long-distance travel on normal road applications.
- The overall tread pattern ensures even ground pressure distribution, offering greater handling stability.



Size	P.R	Pattern	L/S	Standard Rim	Tread Depth (mm)	Section Width (mm)	Tread Width (mm)	Outer Diameter (mm)
315/80R22.5	20PR	NX756	156/153L	9.00	23.0	312	258	1082

29



NX766

Pattern characteristic

- Stone ejectors prevent stone retention and casing damage.
- New tread design delivers excellent traction and cut resistance.
- Wider, deeper tread with special rubber compound extends tyre life.
- Suitable for both drive and trailer axles.



Size	P.R	Pattern	L/S	Standard Rim	Tread Depth (mm)	Section Width (mm)	Tread Width (mm)	Outer Diameter (mm)
315/80R22.5	20PR	NX766	156/153L	9.00	23.0	312	258	1082

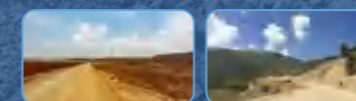
31



NX799

Pattern characteristic

- Suitable for the drive position in short to medium-haul transportation.
- Designed for both paved roads and off-road conditions at speeds under 60 km/h.
- Excellent tread wear resistance.



Size	P.R	Pattern	L/S	Standard Rim	Tread Depth (mm)	Section Width (mm)	Tread Width (mm)	Outer Diameter (mm)
12R22.5	18PR	NX799	152/149L	9.00	23.0	300	240	1096

30



NX789

Pattern characteristic

- Sturdy pattern blocks provide strong traction.
- The wide tread and deep groove design deliver ultra-long mileage and even abrasion.
- Unique tread compound enhances puncture and tear resistance.



Size	P.R	Pattern	L/S	Standard Rim	Tread Depth (mm)	Section Width (mm)	Tread Width (mm)	Outer Diameter (mm)
12R22.5	18PR	NX789	152/149L	9.00	23.0	300	240	1096
295/80R22.5	18PR	NX789	152/149L	9.00	20.0	298	232	1050

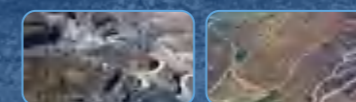
32



NX828

Pattern characteristic

- Extra-wide surface for superior off-road traction on industrial and mining roads.
- Large transverse grooves for strong traction and excellent mud/water evacuation.
- Large-block pattern resists tearing, punctures, and bursting.
- Thickened crash strip boosts burst and scratch resistance.



Size	P.R	Pattern	L/S	Standard Rim	Tread Depth (mm)	Section Width (mm)	Tread Width (mm)	Outer Diameter (mm)
13R22.5	22PR	NX828	156/153D	9.75	24.0	300	240	1131

33



NX858

Pattern characteristic

- Extra-wide surface for superior off-road traction on industrial and mining roads.
- Large transverse grooves for strong traction and excellent mud/water evacuation.
- Large-block pattern resists tearing, punctures, and bursting.
- Thickened crash strip boosts burst and scratch resistance.



Size	P.R	Pattern	L/S	Standard Rim	Tread Depth (mm)	Section Width (mm)	Tread Width (mm)	Outer Diameter (mm)
13R22.5	22PR	NX858	156/153D	9.75	24.0	300	240	1131

35



NX878

Pattern characteristic

- Extra-wide surface for superior off-road traction on industrial and mining roads.
- Large transverse grooves for strong traction and excellent mud/water evacuation.
- Large-block pattern resists tearing, punctures, and bursting.
- Thickened crash strip boosts burst and scratch resistance.



Size	P.R	Pattern	L/S	Standard Rim	Tread Depth (mm)	Section Width (mm)	Tread Width (mm)	Outer Diameter (mm)
13R22.5	22PR	NX878	156/153D	9.75	24.0	300	240	1131

34



NX868

Pattern characteristic

- Applicable to all wheel positions on trucks and trailers.
- Reinforced bead design enhances the tire's load-carrying capacity.
- Special tread compound for short and medium-haul use offers excellent wear resistance.
- Groove-base stone ejectors reduce stone retention and effectively minimize tread damage.



Size	P.R	Pattern	L/S	Standard Rim	Tread Depth (mm)	Section Width (mm)	Tread Width (mm)	Outer Diameter (mm)
12R22.5	18PR	NX868	152/149L	9.00	17.0	300	235	1096
13R22.5	20PR	NX868	156/153L	9.75	16.5	300	253	1131

36



NX888(G)

Pattern characteristic

- Large transverse block design for strong driving and cross-country capability.
- Wide tread and deep grooves for higher mileage.
- Special tread compound with good puncture and tear resistance.



Size	P.R	Pattern	L/S	Standard Rim	Tread Depth (mm)	Section Width (mm)	Tread Width (mm)	Outer Diameter (mm)
9.00R20	16PR	NX888	144/142K	7.00	22.0	259	195	1030
10.00R20	18PR	NX888	149/146K	7.50	24.0	278	215	1065
11.00R20	18PR	NX888G	152/149D	8.00	25.0	293	225	1085
11.00R20	18PR	NX888	152/149D	8.00	25.0	293	225	1096
12.00R20	20PR	NX888G	156/153D	8.50	24.0	315	235	1136
12.00R20	20PR	NX888	156/153D	8.50	24.0	315	235	1136

37



NX898

Pattern characteristic

- Extra-wide surface for superior off-road traction on industrial and mining roads.
- Large transverse grooves for strong traction and excellent mud/water evacuation.
- Large-block pattern resists tearing, punctures, and bursting.
- Thickened crash strip boosts burst and scratch resistance.



Size	P.R	Pattern	L/S	Standard Rim	Tread Depth (mm)	Section Width (mm)	Tread Width (mm)	Outer Diameter (mm)
13R22.5	22PR	NX898	156/153D	9.75	24.0	300	240	1131

39



NX979

Pattern characteristic

- The large-sized main block design and center closed-rib construction enhance puncture and burst resistance under extreme road conditions.
- Stone-ejectors at the groove base effectively prevent stone penetration.
- Ideal for specialized use in mining areas.



Size	P.R	Pattern	L/S	Standard Rim	Tread Depth (mm)	Section Width (mm)	Tread Width (mm)	Outer Diameter (mm)
12.00R20	24PR	NX979	160/157D	8.50	24.0	315	250	1136

38



NX919

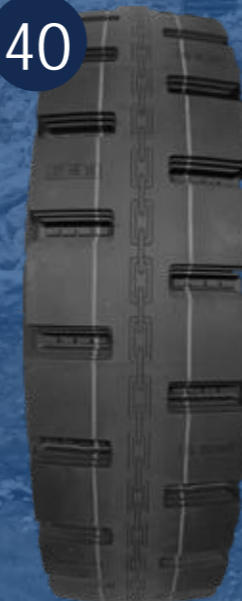
Pattern characteristic

- The large-sized main block design and center closed-rib construction enhance puncture and burst resistance under extreme road conditions.
- Stone-ejectors at the groove base effectively prevent stone penetration.
- Ideal for specialized use in mining areas.



Size	P.R	Pattern	L/S	Standard Rim	Tread Depth (mm)	Section Width (mm)	Tread Width (mm)	Outer Diameter (mm)
12.00R20	24PR	NX919	160/157D	8.50	24.0	315	250	1136

40



NX989

Pattern characteristic

- The large-sized main block design and center closed-rib construction enhance puncture and burst resistance under extreme road conditions.
- Stone-ejectors at the groove base effectively prevent stone penetration.
- Ideal for specialized use in mining areas.



Size	P.R	Pattern	L/S	Standard Rim	Tread Depth (mm)	Section Width (mm)	Tread Width (mm)	Outer Diameter (mm)
12.00R20	24PR	NX989	160/157D	8.50	24.0	315	250	1136

41



NX999

Pattern characteristic

- Suitable for all wheel positions on various trucks and heavy-duty vehicles in harsh industrial and mining environments.
- Extra-wide tread design delivers outstanding off-road capability.
- Large transverse grooves provide strong driving and traction performance.
- Specially thickened sidewall protectors enhance burst and scratch resistance.



Size	P.R	Pattern	L/S	Standard Rim	Tread Depth (mm)	Section Width (mm)	Tread Width (mm)	Outer Diameter (mm)
12.00R20	24PR	NX999	160/157D	8.50	24.0	315	250	1136

43



NX008

Pattern characteristic

- Suitable for all wheel positions on various trucks and heavy-duty vehicles in harsh industrial and mining environments.
- Special tread compound enhances wear resistance, puncture resistance, and burst resistance.
- The reinforced tread and bead design significantly improve the load capacity.



Size	P.R	Pattern	L/S	Standard Rim	Tread Depth (mm)	Section Width (mm)	Tread Width (mm)	Outer Diameter (mm)
12.00R20	24PR	NX008	160/157D	8.50	30.0	315	260	1135

42



NX007

Pattern characteristic

- Suitable for all wheel positions on various trucks and heavy-duty vehicles in harsh industrial and mining environments.
- Its unique tread pattern is specifically designed to meet the demands of harsh and mining roads.
- Features an optimized and reinforced bead design with excellent load-bearing capacity.
- Outstanding durability.



Size	P.R	Pattern	L/S	Standard Rim	Tread Depth (mm)	Section Width (mm)	Tread Width (mm)	Outer Diameter (mm)
12.00R20	24PR	NX007	160/157D	8.50	30.0	315	260	1135

44



NX009

Pattern characteristic

- Suitable for all wheel positions on various trucks and heavy-duty vehicles in harsh industrial and mining environments.
- Reinforced carcass and bead design greatly improves load capacity.
- Especially adapted for short-distance, high-load transportation on various road surfaces.



Size	P.R	Pattern	L/S	Standard Rim	Tread Depth (mm)	Section Width (mm)	Tread Width (mm)	Outer Diameter (mm)
12.00R20	24PR	NX009	160/157D	8.50	30.0	315	260	1135

Usage & Maintenance – Quick Guide

1 TIRE PRESSURE MANAGEMENT

Rule	Key Point
Check when cold	Never bleed or inflate hot tires. Check if idle >6 months
Same axle / duals	Both tires on same axle or dual assembly must have equal pressure
Spare tire	Inspect regularly and keep in usable condition
Incorrect Pressure	Consequences
Under / Over	Reduced life, crown damage, chipping & chunking, lower comfort ↓ grip ↓ retreadability ↓

2 LOADING REQUIREMENTS

- Never overload → Heat build-up → Shoulder separation & bead burst
- Distribute cargo evenly to avoid single tire overload
- High ply rating / heavy load tires → NOT suitable for long high-speed driving

3 DRIVING & MAINTENANCE TIPS

- After 1-2 hours high-speed driving → rest 15-20 minutes, cool naturally, NEVER use cold water
- Avoid sudden acceleration, emergency braking, sharp turns
- Slow down on poor roads to prevent impact from sharp objects
- Replace immediately when worn to wear indicators
- No retread tires on steering axle for safety

4 INSTALLATION & SERVICE SAFETY

Only qualified professionals should mount or repair tires

Inflation safety:

- Must use safety cage + extension hose
- Never stand or lean over a tire while inflating
- NEVER use flammable substances (gasoline, ether, etc.) to seat beads
- Bead seating pressure: Never exceed 40 psi
- If not seated by 40 psi → deflate → relubricate → re-inflate

5 STORAGE REQUIREMENTS

- Store indoors, cool & dry – away from sun, heat, ozone (motors/generators)
- Keep away from oil, grease, gasoline, solvents
- Vertical stack height ≤ 5 feet
- Spare tire: temporary use only (not for long-term storage)

6 DUAL ASSEMBLY MATCHING

Parameter	Tolerance
Diameter difference	≤ 1/4 inch (6.4 mm)
Circumference difference	≤ 3/4 inch (19 mm)



Tyre tread and the road holding area